

SECTION E CONTENTS

THREE WAY VALVES

| DESCRIPTION | PAGE |
|---|------|
| 70-600 Series, Threaded Bronze | E-1 |
| 70-900 Series, Solder Bronze | E-2 |
| 76-600 Series, Threaded Stainless Steel | E-3 |
| 77-640 Series, Full Port Bronze | E-4 |
| 3-Way Valve Application | E-5 |



70-600 Series



3-Way Diversion Bronze Ball Valve

Threaded, 400 psig WOG, Cold Non-Shock.

FEATURES

- Two piece body
- Reinforced seats

- Blow-out-proof stem design
- Adjustable packing gland

STANDARD MATERIAL LIST

- | | |
|-------------------|--|
| 1. Lever and grip | Steel, zinc plated w/vinyl |
| 2. Stem packing | MPTFE |
| 3. Stem bearing | RPTFE |
| 4. Ball | B16, chrome plated |
| 5. Seat (2) | RPTFE |
| 6. Retainer | B16 (1/4" to 1") B584-C84400 (1-1/4" to 2") |

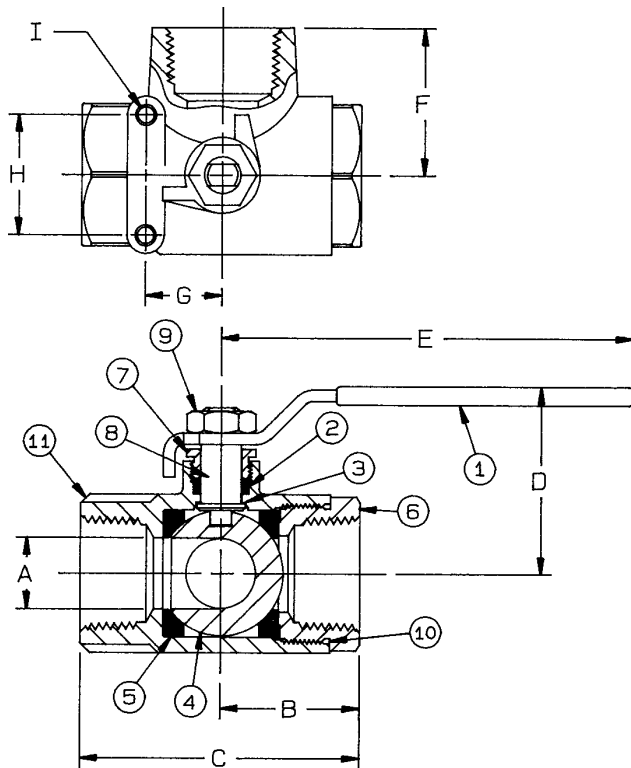
- | | |
|------------------------------|--------------------|
| 7. Gland nut | B16 |
| 8. Stem | B16 |
| 9. Lever nut | Steel, zinc plated |
| 10. Body seal (1-1/2" to 2") | PTFE |
| 11. Body | B584-C84400 |

VARIATIONS AVAILABLE:

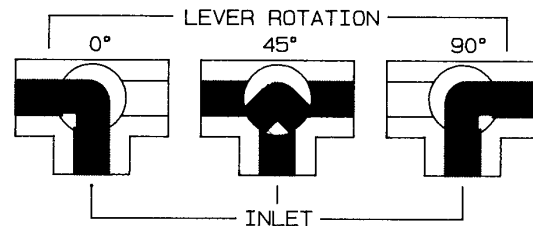
70-640 Series (316 SS Ball & Stem)

OPTIONS AVAILABLE:

| (SUFFIX) | OPTION | SIZES |
|----------|-------------------------------------|------------|
| -02- | Stem Grounded | 1/4" to 2" |
| -04- | 2-1/4" CS Stem Extension | 1/4" to 2" |
| -05- | Plain Ball | 1/4" to 2" |
| -10- | SS Lever & Nut | 1/4" to 2" |
| -17- | Rough Chrome Plated - Bronze Valves | 1/4" to 2" |
| -21- | UHMWPE Seats (Non-PTFE) | 1/4" to 2" |
| -24- | Graphite Packing | 1/4" to 2" |
| -27- | SS Latch-Lock Lever & Nut | 1/4" to 2" |
| -35- | VTFE Trim | 1/4" to 2" |
| -49- | Assembled Dry | 1/4" to 2" |
| -50- | 2-1/4" CS Locking Stem Extension | 1/4" to 2" |
| -56- | Multifill Seats & Packing | 1/4" to 2" |
| -57- | Oxygen Cleaned | 1/4" to 2" |
| -60- | Grounded Ball & Stem | 1/4" to 2" |
| -P01- | BSPP (Parallel) Thread Connection | 1/4" to 2" |
| -T01- | BSPT (Tapered) Thread Connection | 1/4" to 2" |



FLOW PATTERN



NOTE: Open port pressure must exceed Closed port pressure.

3-WAY DIVERSION BRONZE BALL VALVE

| NUMBER | SIZE | A | B | C | D | E | F | G | H | I | Wt. |
|-----------|--------|------|------|------|------|------|------|------|------|--------|------|
| 70-601-01 | 1/4" | .43 | 1.09 | 2.25 | 1.87 | 3.88 | 1.18 | .875 | 1.37 | 10-24 | .91 |
| 70-602-01 | 3/8" | .50 | 1.09 | 2.25 | 1.87 | 3.88 | 1.18 | .875 | 1.37 | 10-24 | .88 |
| 70-603-01 | 1/2" | .50 | 1.09 | 2.25 | 1.87 | 3.87 | 1.18 | .875 | 1.37 | 10-24 | .76 |
| 70-604-01 | 3/4" | .68 | 1.48 | 2.97 | 2.08 | 4.78 | 1.62 | .875 | 1.37 | 10-24 | 1.65 |
| 70-605-01 | 1" | .87 | 1.59 | 3.20 | 2.18 | 4.78 | 1.68 | .875 | 1.37 | 10-24 | 2.15 |
| 70-606-01 | 1-1/4" | 1.01 | 1.99 | 3.98 | 2.72 | 5.43 | 2.09 | .937 | 1.50 | 1/4-20 | 3.85 |
| 70-607-01 | 1-1/2" | 1.26 | 2.19 | 4.38 | 2.90 | 5.43 | 2.38 | .937 | 1.50 | 1/4-20 | 5.22 |
| 70-608-01 | 2" | 1.50 | 2.34 | 4.66 | 3.00 | 5.43 | 2.50 | .937 | 1.50 | 1/4-20 | 6.20 |

For Pressure/Temperature Ratings, Refer to Page M-8, Graph No. 3



70-900 Series



3-Way Diversion Bronze Solder End Ball Valve

Solder, 400 psig WOG, Cold Non-Shock.

FEATURES

- Two-piece body
- Reinforced seats
- Blow-out-proof stem design
- Adjustable packing gland

STANDARD MATERIAL LIST

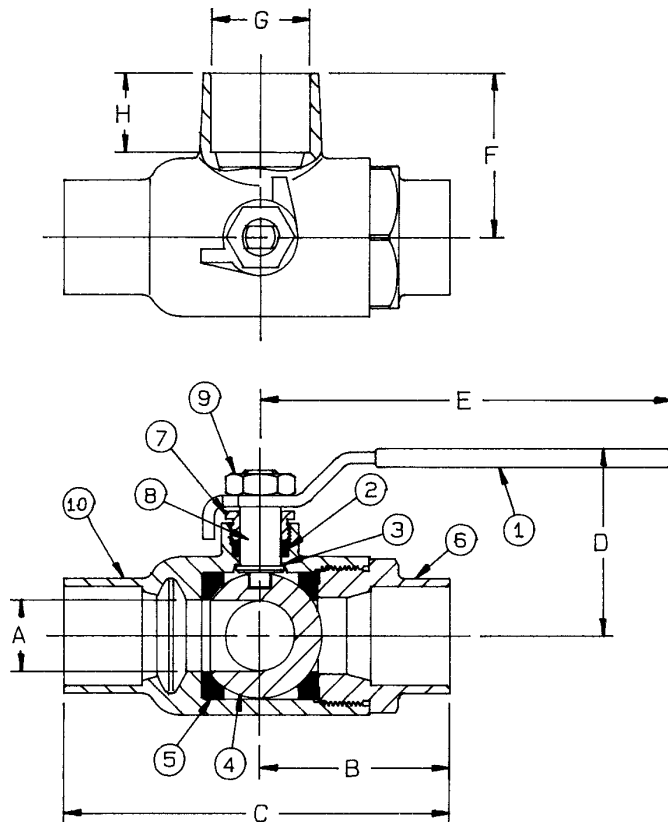
| | | | |
|-------------------|----------------------------|--------------|--------------------|
| 1. Lever and grip | Steel, zinc plated w/vinyl | 6. Retainer | B16 |
| 2. Stem packing | MPTFE | 7. Gland nut | B16 |
| 3. Stem bearing | RPTFE | 8. Stem | B16 |
| 4. Ball | B16, chrome plated | 9. Lever nut | Steel, zinc plated |
| 5. Seat (2) | RPTFE | 10. Body | B584-C84400 |

VARIATIONS AVAILABLE:

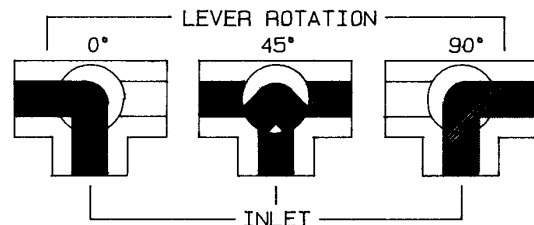
70-940 Series (316 SS Ball & Stem)

OPTIONS AVAILABLE:

| (SUFFIX) | OPTION | SIZES |
|----------|-------------------------------------|------------|
| -02- | Stem Grounded | 1/2" to 1" |
| -04- | 2-1/4" CS Stem Extension | 1/2" to 1" |
| -05- | Plain Ball | 1/2" to 1" |
| -10- | SS Lever & Nut | 1/2" to 1" |
| -17- | Rough Chrome Plated - Bronze Valves | 1/2" to 1" |
| -21- | UHMWPE Seats (Non-PTFE) | 1/2" to 1" |
| -24- | Graphite Packing | 1/2" to 1" |
| -27- | SS Latch-Lock Lever & Nut | 1/2" to 1" |
| -35- | VTFE Trim | 1/2" to 1" |
| -49- | Assembled Dry | 1/2" to 1" |
| -50- | 2-1/4" CS Locking Stem Extension | 1/2" to 1" |
| -56- | Multifill Seats & Packing | 1/2" to 1" |
| -57- | Oxygen Cleaned | 1/2" to 1" |
| -60- | Grounded Ball & Stem | 1/2" to 1" |



FLOW PATTERN



NOTE: Open port pressure must exceed Closed port pressure.

The 70-900 is designed to be soft soldered into lines without disassembly. This allows a tested valve to be installed without disturbing the seats and seals in any way. Soldering temperature not to exceed 500°F.

3-WAY DIVERSION BRONZE BALL VALVE

| NUMBER | SIZE | A | B | C | D | E | F | G | H | Wt. |
|-----------|------|------|------|------|------|------|------|-------|-----|------|
| 70-903-01 | 1/2" | .50 | 1.44 | 2.33 | 2.04 | 3.87 | 1.34 | .628 | .50 | .76 |
| 70-904-01 | 3/4" | .68 | 1.94 | 3.04 | 2.08 | 4.78 | 1.69 | .878 | .75 | 1.65 |
| 70-905-01 | 1" | .875 | 2.24 | 3.50 | 2.16 | 4.78 | 1.87 | 1.129 | .90 | 2.15 |

**For Pressure/Temperature Ratings,
Refer to Page M-8, Graph No. 3**



76-600 Series



3-Way Diversion Stainless Steel Ball Valve

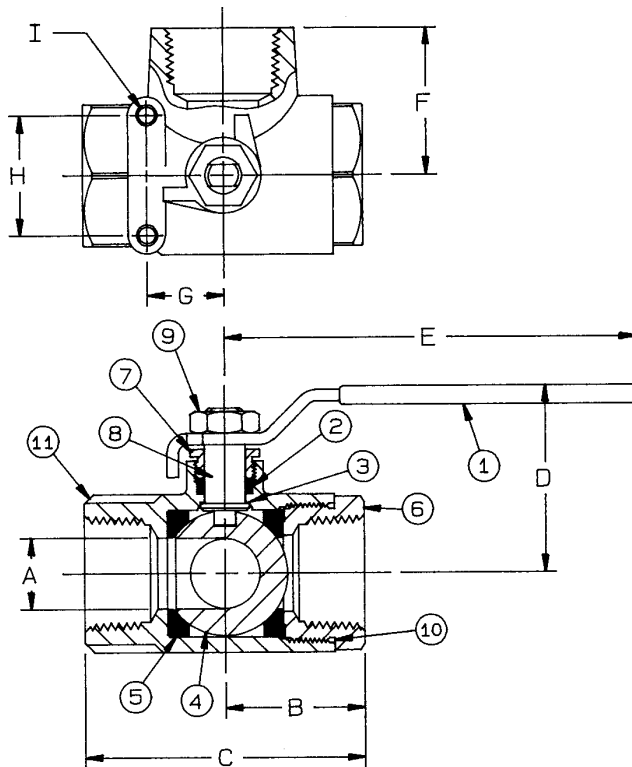
Threaded, 800 psig WOG, Cold Non-Shock.

FEATURES

- Reinforced seats
- Meets NACE MR-01-75
- Blow-out-proof stem design
- Adjustable packing gland
- Investment cast body

STANDARD MATERIAL LIST

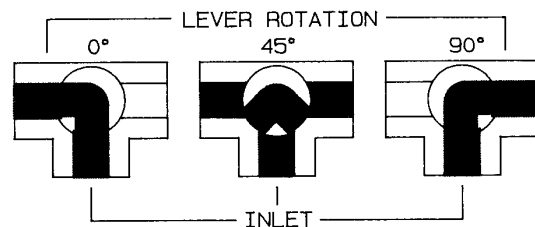
| | | | |
|-------------------|---|------------------------------|-----------|
| 1. Lever and grip | 304 SS w/vinyl | 7. Gland nut | A276-316 |
| 2. Stem packing | MPTFE | 8. Stem | A276-316 |
| 3. Stem bearing | RPTFE | 9. Lever nut | 18-8 SS |
| 4. Ball | A276-316 | 10. Body seal (1-1/2" to 2") | PTFE |
| 5. Seat (2) | RPTFE | 11. Body | A351-CF8M |
| 6. Retainer | A276-316 (1/4" to 1") A351-CF8M (1-1/2" to 2") | | |



OPTIONS AVAILABLE:

| (SUFFIX) | OPTION | SIZES |
|----------|-----------------------------------|------------|
| -02- | Stem Grounded | 1/4" to 2" |
| -04- | 2-1/4" CS Stem Extension | 1/4" to 2" |
| -21- | UHMWPE Seats (Non-PTFE) | 1/4" to 2" |
| -24- | Graphite Packing | 1/4" to 2" |
| -27- | SS Latch-Lock Lever & Nut | 1/4" to 2" |
| -35- | VTFE Trim | 1/4" to 2" |
| -49- | Assembled Dry | 1/4" to 2" |
| -50- | 2-1/4" CS Locking Stem Extension | 1/4" to 2" |
| -56- | Multifill Seats & Packing | 1/4" to 2" |
| -57- | Oxygen Cleaned | 1/4" to 2" |
| -60- | Grounded Ball & Stem | 1/4" to 2" |
| -P01- | BSPP (Parallel) Thread Connection | 1/4" to 2" |
| -T01- | BSPT (Tapered) Thread Connection | 1/4" to 2" |

FLOW PATTERN



NOTE: Open port pressure must exceed Closed port pressure.

3-WAY DIVERSION STAINLESS STEEL BALL VALVE

| NUMBER | SIZE | A | B | C | D | E | F | G | H | I | Wt. |
|-----------|--------|-------|------|------|------|------|------|------|-------|--------|------|
| 76-601-01 | 1/4" | .437 | 1.12 | 2.32 | 1.80 | 3.88 | 1.18 | .875 | 1.375 | 10-24 | .7 |
| 76-602-01 | 3/8" | .437 | 1.12 | 2.32 | 1.80 | 3.88 | 1.18 | .875 | 1.375 | 10-24 | .68 |
| 76-603-01 | 1/2" | .505 | 1.12 | 2.32 | 1.80 | 3.88 | 1.18 | .875 | 1.375 | 10-24 | .75 |
| 76-604-01 | 3/4" | .687 | 1.47 | 2.97 | 2.06 | 4.78 | 1.50 | .875 | 1.375 | 10-24 | 1.45 |
| 76-605-01 | 1" | .875 | 1.60 | 3.20 | 2.15 | 4.78 | 1.68 | .875 | 1.375 | 10-24 | 1.86 |
| 76-607-01 | 1-1/2" | 1.265 | 1.99 | 4.38 | 3.03 | 5.43 | 2.40 | .937 | 1.50 | 1/4-20 | 4.67 |
| 76-608-01 | 2" | 1.515 | 2.75 | 5.45 | 3.22 | 5.43 | 2.81 | .937 | 1.50 | 1/4-20 | 7.02 |

**For Pressure/Temperature Ratings,
Refer to Page M-16, Graph No. 21**



77-648-27 Series



2" Full Port 3-Way Diversion Bronze Ball Valve

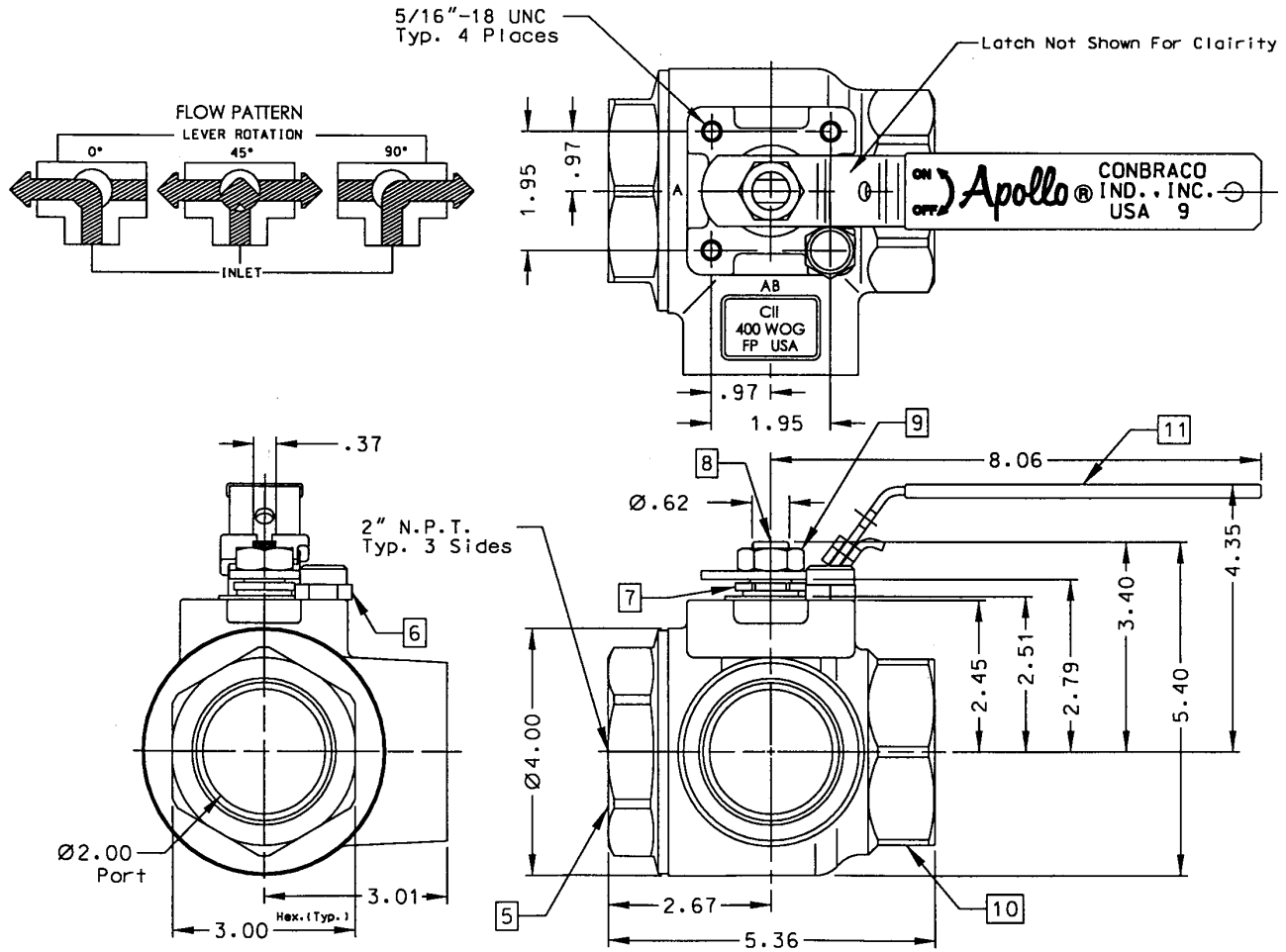
Threaded, 2" 400 psig CWP Cold Non-Shock

FEATURES

- Cast Body & Retainer
- MPTFE seats and stem packing
- Four Bolt ISO Mounting ISO 5211 (F07)
- Blow-out-proof stem design
- Adjustable packing gland
- SS Lever and Nut
- Latch Lock Lever

STANDARD MATERIAL LIST

| | | | |
|-----------------|------------------|--------------------|------------------|
| 1. Stem packing | MPTFE | 7. Gland | ASTM B-16 |
| 2. Stem bearing | RPTFE | 8. Stem | A276 316 SS |
| 3. Ball | A276 316 SS | 9. Lever Nut | 304 SS |
| 4. Seat (2) | MPTFE | 10. Body | ASTM B584 C84400 |
| 5. Retainer | ASTM B584 C84400 | 11. Lever and Grip | SS w/Vinyl |
| 6. Stop | A276 316 SS | | |



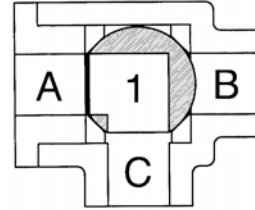
**For Pressure/Temperature Ratings,
Refer to Page M-8, Graph No. 3**



3-Way Valves

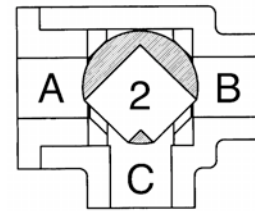
Mixing Vs. Diverting

Illustrated to the right are the three normal operating positions for a three-way valve. Apollo's three-way valve has only two (2) seats as illustrated and as such has limitations for use in both diverter and mixing valve applications. As can be seen from this illustration, there is no off position for port "C". Ports "A" and "B" cannot be off at the same time.



Apollo's Three-Way Valve as a Mixing Valve

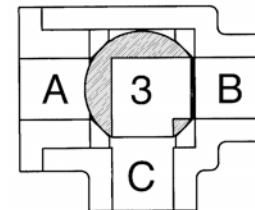
When ports "A" and "B" are the inlets, and port "C" is the outlet, the valve becomes a mixing valve. With minor variations in position 2 the percentage of components at "A" and "B" can be varied to the outlet "C". This has been successfully applied to hydronic systems.



It may not be possible to isolate the ports from one another in any position. If the valve is in position 1, and the pressure at port "B" is significantly higher than port "A", the ball may be forced off the seat allowing mixing from all ports. Whether or not this is a problem depends on the application and its sensitivity to unwanted mixing.

Apollo's Three-Way Valve as a Diverter Valve

When port "C" is the inlet, and ports "A" and "B" are the outlets, the valve is a diverter valve. With port "C" as the inlet, flow is diverted to either port "A" (position 1) or "B" (position 3). In position 2, inlet flow from "C" is split to "A" and "B".



Just as described above, it may not be possible to isolate any one port from the other two. That condition is most likely to occur in mixing applications. That is why the valve tends to be promoted as a diverter valve rather than a mixing valve.